



Photo by Sulthan Auliya on Unsplash

SMART CITY WASTE

*Transforming cities into
technology-enhanced urban
areas using new multifunctional
smart city infrastructure*

- NO MORE LITTER
- LOWER CO₂ EMISSION
- LESS COST
- SUSTAINABLE

INTRODUCING OUR RANGE OF SMART BINS



ULTRA FILL 120L^{little}

- Container 120 Ltr.
- Sensors, IoT controller, battery
- Solar panels
- Self-compacting
- Actuator 6000N
- Remote locking possibility
- Automatically locks when full
- Smallest on market
- 1 – year access to Smart City Manager Software
- Anti Graffiti Coating
- \$8400 + GST



ULTRA FILL 240L

- Container 240 Ltr.
- Sensors, IoT controller, battery
- Solar panels
- Self-compacting
- Actuator 6000N
- Remote locking possibility
- Automatically locks when full
- 1 – year access to Smart City Manager Software
- Anti Graffiti Coating
- \$9600 + GST



ULTRA FILL 120L

- Container 120 Ltr.
- Sensors, IoT controller, battery
- Solar panels
- Self-compacting
- Actuator 6000N
- Remote locking possibility
- Automatically locks when full
- 1 – year access to Smart City Manager Software
- Anti Graffiti Coating
- \$8400 + GST



SMART CITY

SMART CITY CONTINUES TO SAVE

5 to 7 times as much capacity

Compression with the press allows compaction of at least 1:5

At a distance

The flap can be locked remotely

75% cost savings

The waste bin does not need to be emptied as often, which results in significant cost savings.

THE STRONGEST IN THE MARKET

2mm high-quality steel

Mr. Fill is vandal-proof and has a very long life.

Robust stainless-steel closing lap

The flap is made of extremely strong material, making it resistant to all weather conditions. Unlike a hopper, the flap is not trapped by waste. The flap closes itself upon full notification.

Always connected to our
Smart City Manager platform

Made in the Netherlands

3 year warranty due to robust quality



SMART CITY



ANGLED SOLAR PANEL FOR THE BEST SUN CAPACITY

PERSONALISED DISPLAY AND COMMUNICATES WITH THE AUDIENCE

24/7 GREAT VISIBLE RGB LED

CAN BE LOCKED REMOTELY VIA OUR PLATFORM AT ANY TIME OF THE DAY

STAINLESS STEEL FLAP

FLAP LOCKS ITSELF WHEN THE BIN IS FULL

6000N COMPACTOR FOR THE BEST WASTE CAPACITY

HEAVY DUTY FOOT PEDAL

BEST QUALITY POWDER COATING

VANDALISM PROOF BECAUSE OF HEAVY DUTY DESIGN

NO MORE LITTER

LOWER CO2 EMISSIONS

LESS COST

Smart Waste Collection

- Reduction of CO2 emissions
- Environmental and operational savings ever year
- The bin can be locked remotely on distance
- Bin can be personalised to clients spec
- Fully customisable branding, wrap, colours etc.
- Bottle flap with bottle compactor



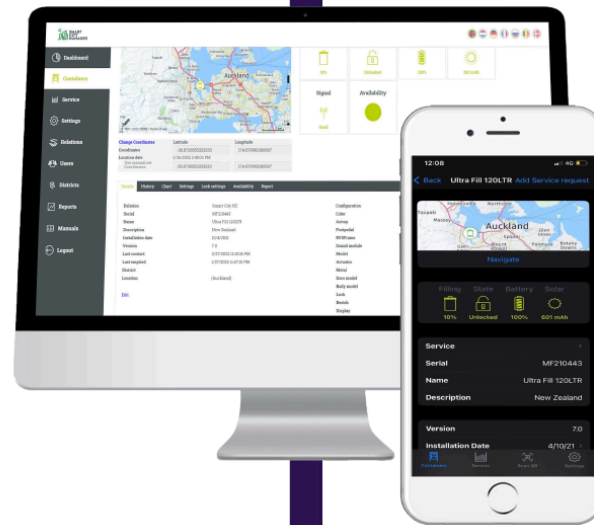
SMART CITY

STAY CONNECTED WITH SMART CITY MANAGER

Smart City Manager is a management and monitoring system that registers the status and usage data of the waste bin and informs your employees. If the waste bin needs to be emptied, Smart City Manager reports this on time by the app or an e-mail on your PC, tablet or smartphone.



SMART CITY

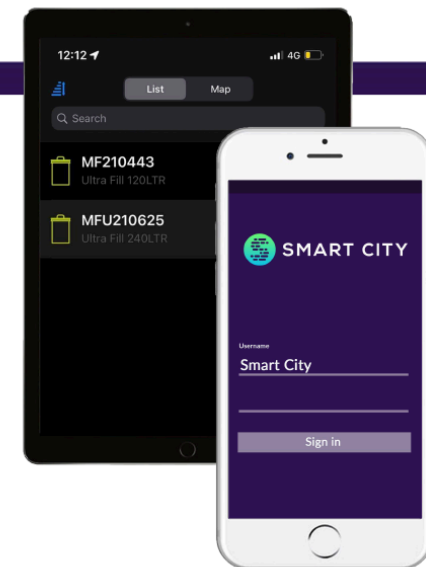


Management & monitoring system

The settings of Smart City Manager can easily be adapted to your own wishes using your personal login data.
The waste bin communicates 24 times a day with our platform

Always and everywhere

Via the Smart City Manager app you always have access to all information regarding the Smart City Bins.



Vandalism proof & remotely lockable

Smart City offers the possibility to lock the access valve remotely, for example during the New Year's Eve. This saves time, money and unnecessary concerns



Smart city manager Software licenses

Features

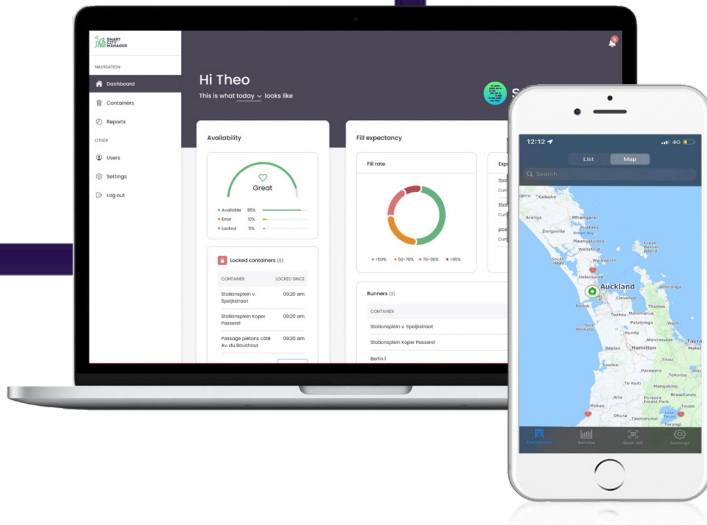
1 year - Smart City Manager

5 year - Smart City Manager

Clear dashboard

Smart City Manager knows exactly what is going on in your city.

- Waste bin fill level
- Battery voltage measurement
- Solar energy capacity
- Location of the waste bin
- Remote locking of the waste bin
- Smart route



SMART CITY

